



FRONT ELEVATION

41'3" or 39'0"

38'0"

Bedroom 3
x 15'0"

Bedroom 4
x 12'0"

Bedroom 2
13'0" x 15'0"

Bedroom 5
13'0" x 12'0"

BATH 1

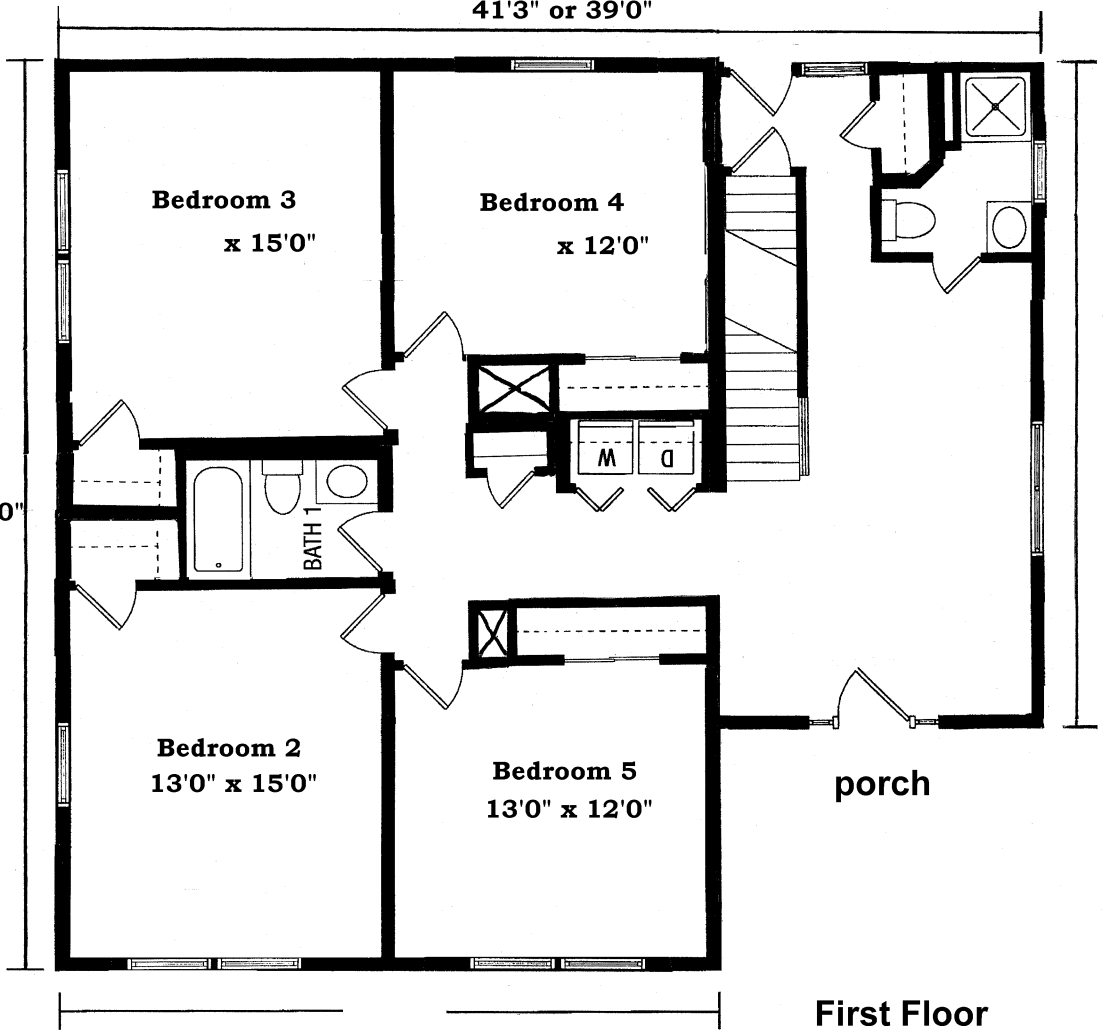
M

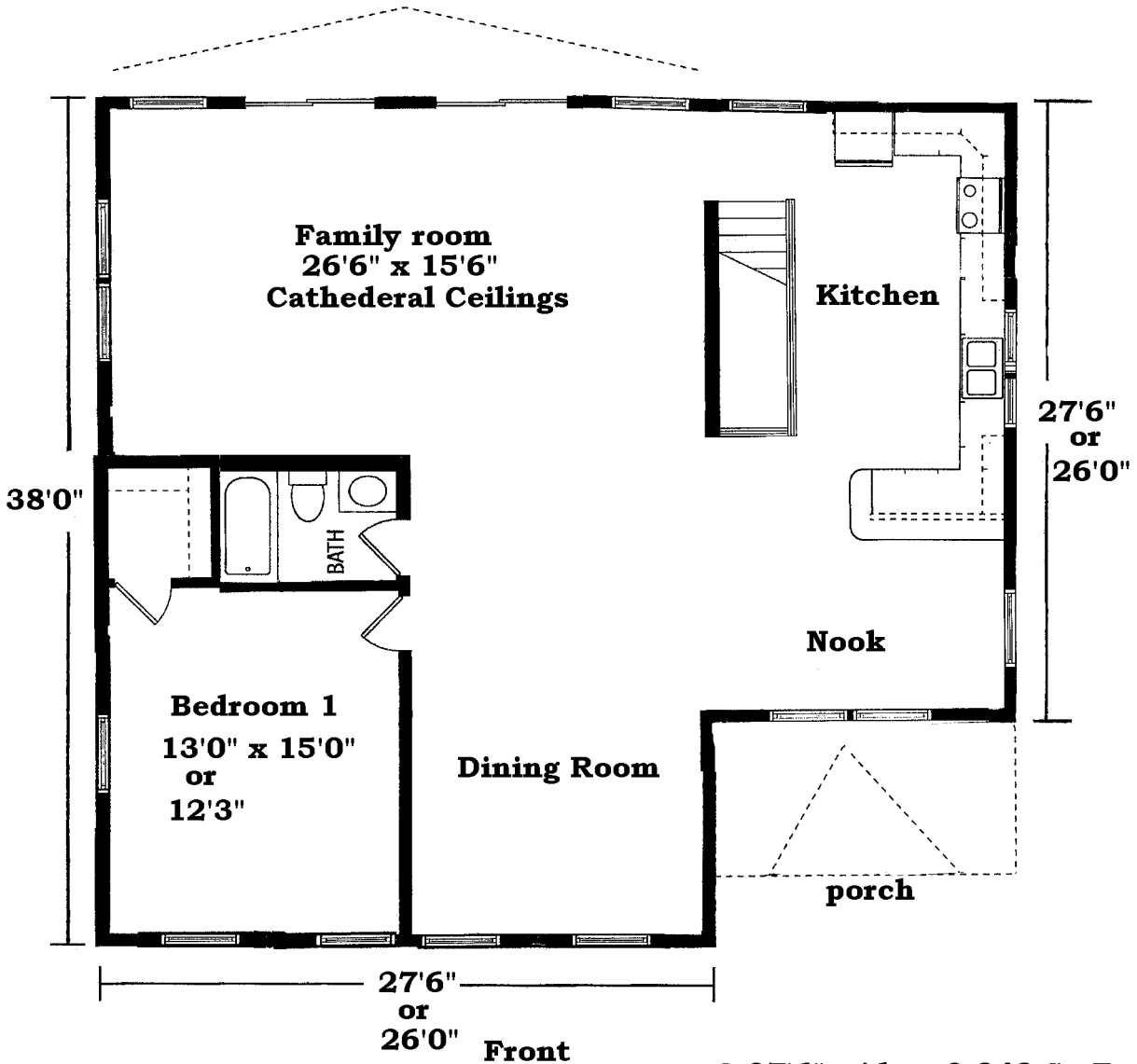
D

porch

First Floor

Front





Second floor

@ 27'6" wide = 2,848 Sq Ft

@ 26 wide = 2,652 Sq Ft